

Quick Installation Manual

Apple iOS Quick installation Guide: P 2 ~ P 6

Android Quick installation Guide P 7 ~ P 11

Provision-ISR PnV IP Camera iOS Quick installation Guide:



1 Plug Camera to LAN and Power Supply:

- Connect the camera to an AC power source using the provided power supply.
- Connect the camera to a router with internet access using the provided network cable. Make sure that the green/yellow network indicators are on.
- Wait for the camera to finish initializing (Around 20 seconds).

2 Install iPhone Application "ProvisionPnV":

- Install the free "ProvisionPnV" application from Apple App Store.
- After installation completes – Open the application:



3 Add your camera/s:

- In the opened screen press "Add Camera"
- Scan the QR code on the back of the camera, input the password and press "done"



Point the camera towards the QR code
The camera will recognize it automatically

Notes:

- You may change the name of the camera in this stage.
- It is highly recommended to change the password after first installation, in order to change the default password go to the "Password Setting" under the camera settings menu.
- You can also search for camera by click "search" This will automatically find all the cameras available on your network

4 Congratulations!!

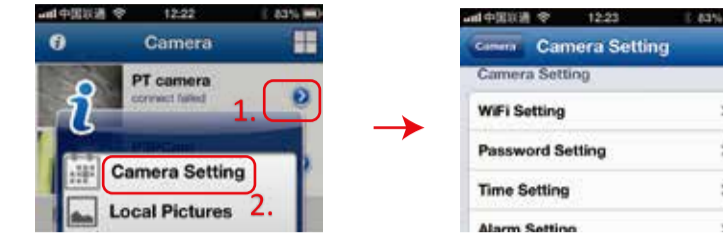
The camera is now added to your iPhone. Press on it in order to view it. You may perform some additional setup actions described below in order to enhance the functionality of the camera.

Please note:

- In case that you notice flickering image go to the camera setting and change the "View mode" to 50/60 KHz according to the electricity system in your country.
- In case that the image from the camera is blurry, rotate the lens outer ring in order to focus the image.

5 Additional Setup:

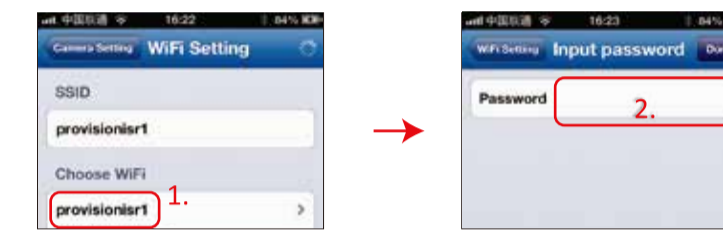
In order to access the setup menu press the right arrow and then "camera setting".



a. WiFi Setting:

Here you may connect the camera to a wireless internet network in order to free the camera from using the wired LAN connection.

- Go to "WiFi Setting" in the settings menu.
- The camera will automatically search and display the available WiFi networks. Please allow the search process to complete. The process of searching may take up to 20 seconds.
- Choose the desired network and enter the network password in the following screen.



b. Local SD card installation:

You may add and configure a micro SD card for local video recording.

- Insert a micro SD card to the designated slot (Maximum capacity 32GB)
- Go to the "SD setting" in the settings menu.
- Press "SD Format" and confirm in the following Prompt.

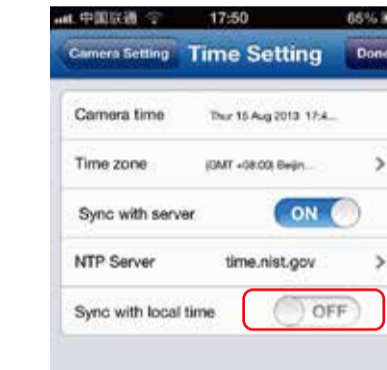
Important note: Make sure that SD status is showing "SD Card Recording".



c. Time Settings:

In order to have the correct time stamp on the camera live view and recorded files, you must set the camera's clock:

- In the camera settings press on "Time Setting"
- In the next menu switch "Sync With Local Time" to On. It will update the time of the camera and switch back to off automatically.



PROVISION ISR
Now you can see!



<http://www.provision-isr.com>

Provision-ISR PnV IP Camera Android Quick installation Guide



1 Plug Camera to LAN and Power Supply:

- Connect the camera to an AC power source using the provided power supply.
- Connect the camera to a router with internet access using the provided network cable. Make sure that the green/yellow network indicators are on.
- Wait for the camera to finish initializing (Around 20 seconds).

2 Install Android Application "ProvisionPnV":

- Install the free "ProvisionPnV" application from Google Play Store.
- After installation completes – Open the application:



3 Add your camera/s:

- In the opened screen press "Add Camera"
- Scan the QR code on the back of the camera, input the password and press "done"



Point the camera towards the QR code
The camera will recognize it automatically

Notes:

- You may change the name of the camera in this stage.
- It is highly recommended to change the password after first installation, in order to change the default password go to the "Password Setting" under the camera settings menu.
- You can also search for camera by click "search" This will automatically find all the cameras available on your network

4 Congratulations!!

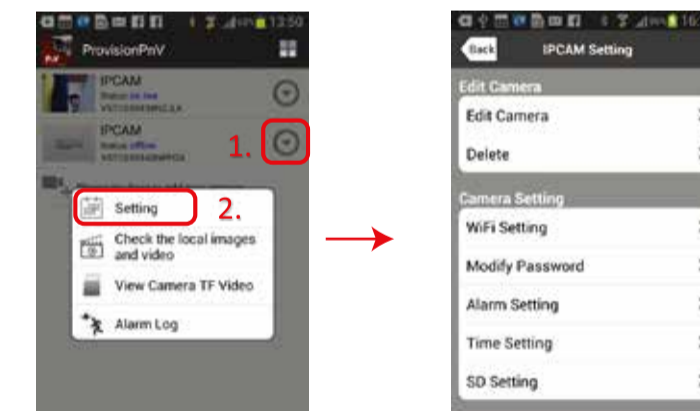
The camera is now added to your Android. Press on it in order to view it. You may perform some additional setup actions described below in order to enhance the functionality of the camera.

Please note:

- In case that you notice flickering image go to the camera setting and change the "View mode" to 50/60 KHz according to the electricity system in your country.
- In case that the image from the camera is blurry, rotate the lens outer ring in order to focus the image.

5 Additional Setup:

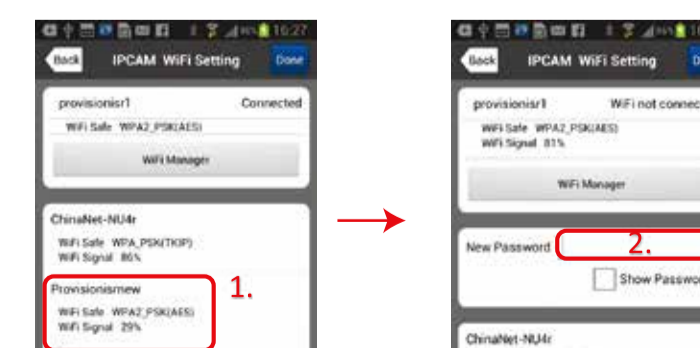
In order to access the setup menu press the right arrow and then "camera setting".



a. WiFi Setting:

Here you may connect the camera to a wireless internet network in order to free the camera from using the wired LAN connection.

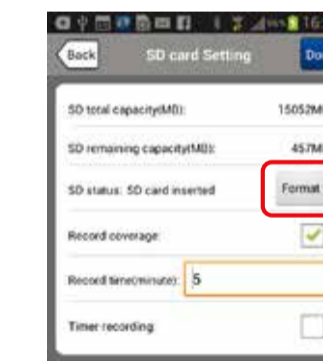
- Go to "WiFi Setting" in the settings menu.
- The camera will automatically search and display the available WiFi networks. Please allow the search process to complete. The process of searching may take up to 20 seconds.
- Choose the desired network and enter the network password in the following screen.



b. Local SD card installation:

You may add and configure a micro SD card for local video recording.

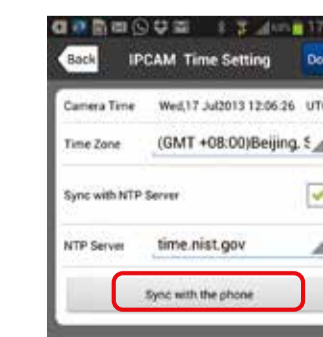
- Insert a micro SD card to the designated slot (Maximum capacity 32GB)
- Go to the "SD setting" in the settings menu.
- Press "SD Format" and confirm in the following Prompt.



c. Time Settings:

In order to have the correct time stamp on the camera live view and recorded files, you must set the camera's clock:

- In the camera settings press on "Time Settings"
- In the next click "Sync With The Phone" to On. It will update the time zone of the camera to match the time of the phone



Download link to PC Video Player:

1) **Direct link:**
www.provision-isr.com/P&V_CMS/P&V_CMS.zip

2) **QR Code:**



PROVISION ISR
Now you can see!

Quick Installation Manual



WP-717
Plug & View IP Camera
as Simple as it Sounds...