

FIRMWARE ANNOUNCEMENT

January 2024

SUBJECT

Experience the improved **Ossia NVR - V1.4.10**

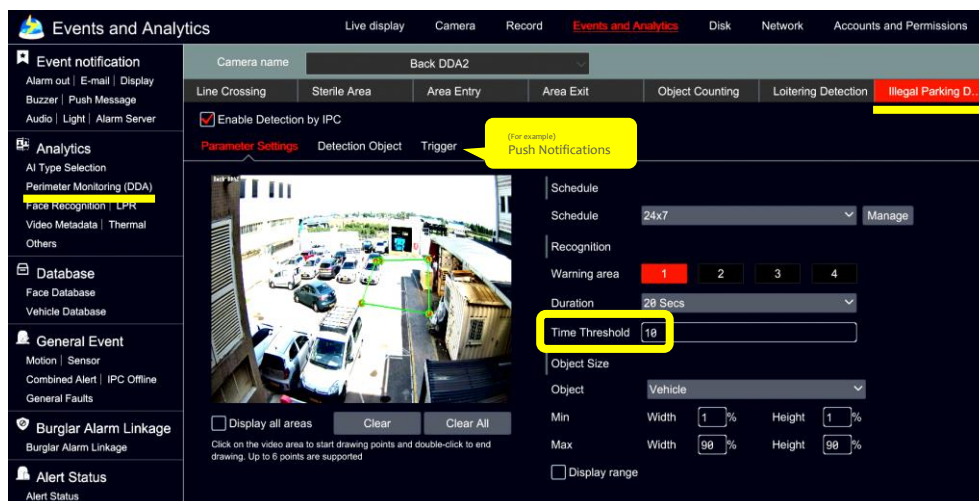
Ossia NVR v1.4.10 (supported models at the end) LIST OF IMPROVEMENTS:

1) NEW: ILLEGAL PARKING

Parking in a prohibited space? Blocking someone's car? Not on our watch!

Take control with our latest feature that delivers **real-time sound alarms** and **alert notifications** for unruly parking situations.

You can **set up to 4 different forbidden parking spaces**, pick 4-wheeled, 2-wheeled, or both, and **easily search** for those events and use them later as evidence.



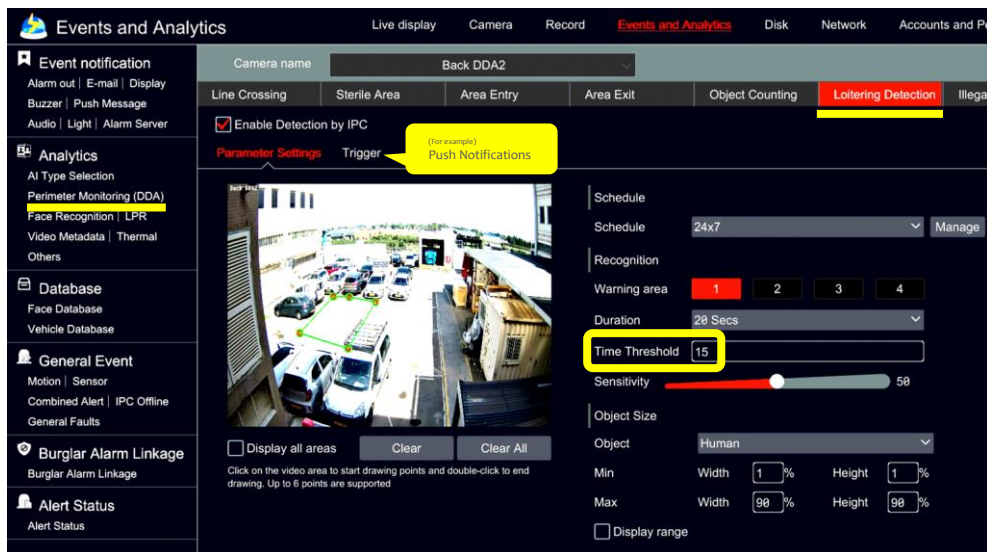
[Watch the Video](#)

2) NEW: LOITERING

Is someone hanging around for no apparent reason? Lurking outside a bank, wandering aimlessly around a store for an hour without intending to buy anything? Want to know what they're about? Well, say hello to the new Loitering Detection!

It allows you to receive **real-time sound alarms** and **alert notifications** whenever someone wanders around in the area for too long.

You can **set up 4 different areas**, easily search for those events, and use them later as evidence.



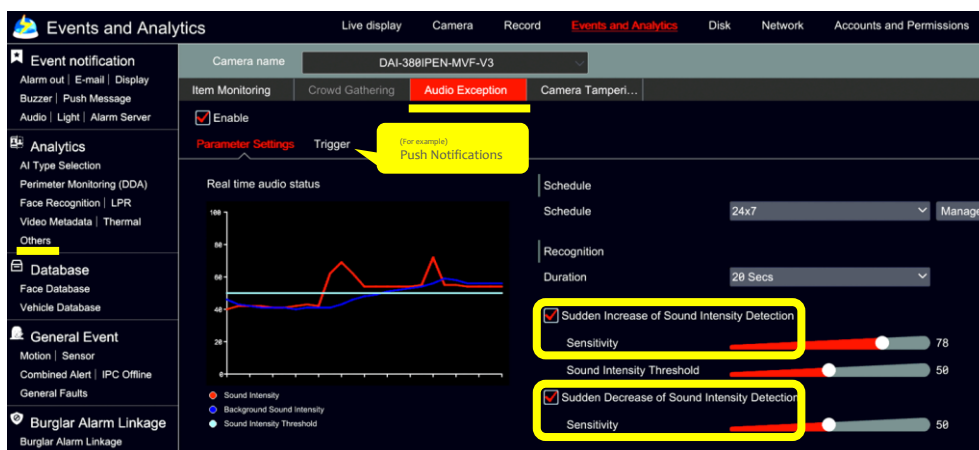
Watch the Video

3) NEW: AUDIO EXCEPTION

Alerts with Impact: Real-Time Sound Surveillance!

From sudden gunshots to unexpected silence, receive **real-time sound alarms** and **alert notifications** when **sound intensifies**, such as gunshots, dog barking, kids playing soccer indoors, or **decreases below the acceptable volume level**, like heavy machinery stopping working or construction site noises stopping abruptly during expected working hours.

You can also **set your preferred threshold needs**, ensuring notifications are only received for prolonged anomalies.

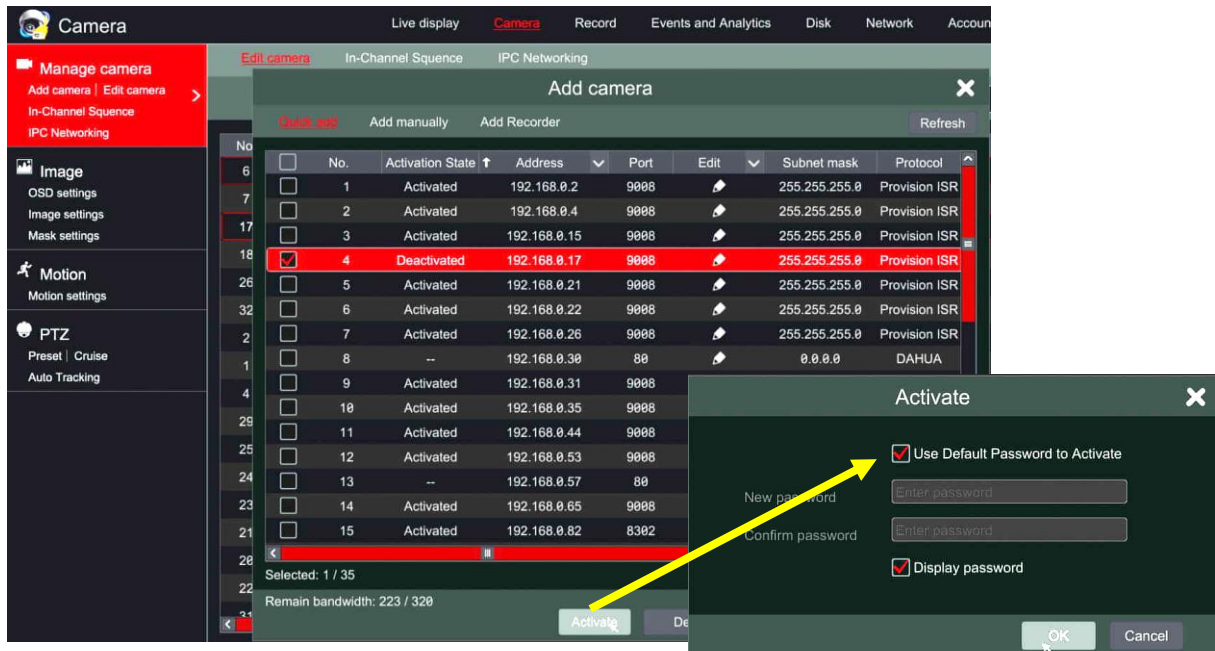


Watch the Video

4) NEW: IPC ACTIVATION

Forget the hassle of activating IPC only through the IP manager.

Now, you can **do it effortlessly right from the NVR's interface**. Plus, during activation, easily set the **IPC password to match the NVR's default**, Simplifying the process and making security a breeze!



Watch the Video

5) IMPROVED: PASSWORD STRENGTH

Robust Guard: FW v1.4.10 establishes a new default: "strong" password.

Previously, any password strength could be used. With FW v1.4.10, the **default password requirement is "strong."**

If you upgrade the firmware with a medium or low password, the NVR will stay connected to the App/VMS.

However, if you log out or access the NVR through the web-cloud interface, you will be prompted to change to a "strong" password.

Modify password

Current password

New password

Confirm password

1.8 to 16 characters 2.Support three or more numbers,letters,special characters

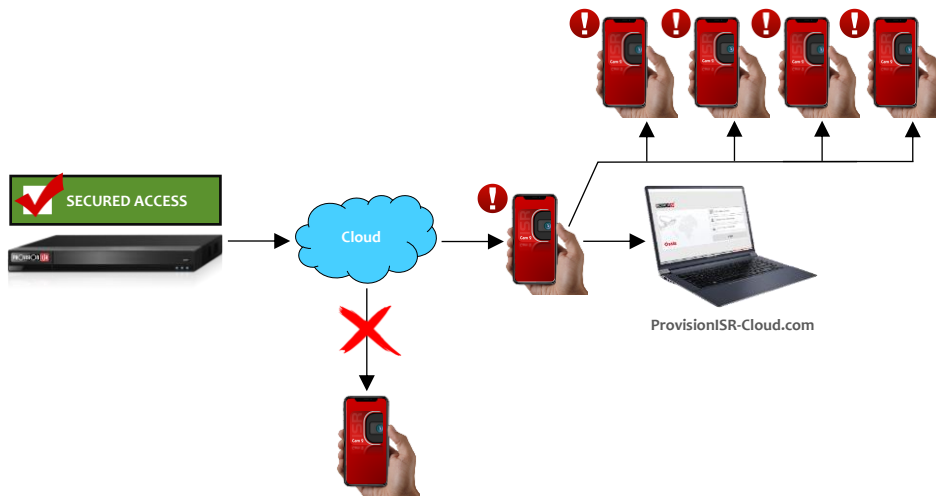
OK Cancel

6) NEW: SECURED ACCESS

QR Code? Not Today! Double Authentication puts the brakes on NVR break-ins!

Before this new feature, anyone scanning the QR code or using the S/N with the right credentials could log in to the NVR using the cloud.

With **Secured Access**, Say goodbye to unauthorized access via the cloud. Anyone scanning the QR code **is blocked**, and Cloud website access requires **Double Authentication**: it sends a push notification to the **bound end-user** (the owner) with a **one-time code** to give to the person trying to access the NVR.



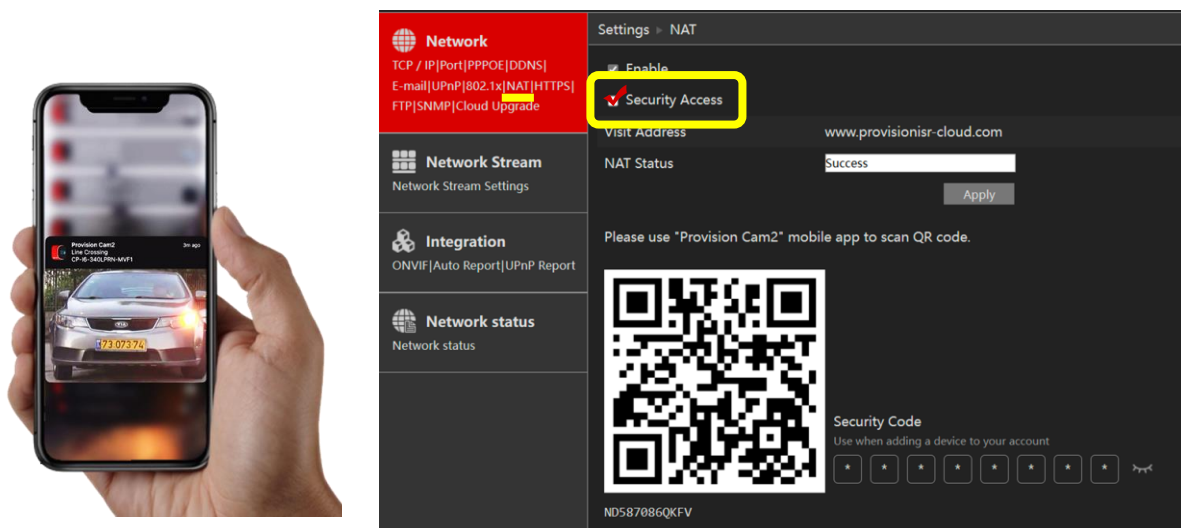
7) IMPROVED: ANALYTICS THUMBNAIL NOTIFICATIONS

Preview and Respond: A New Dawn in Notifications!

Thanks to the new push 2.0 mechanism on the NVR, users can now preview notifications without unlocking their phones. The notification message appears on the lock screen with an **expandable thumbnail that displays an entire image**, allowing users to respond promptly and effectively.

* Requires Cam2 App Account Binding + Secured Access.

** The Secured Access feature needs to be activated.



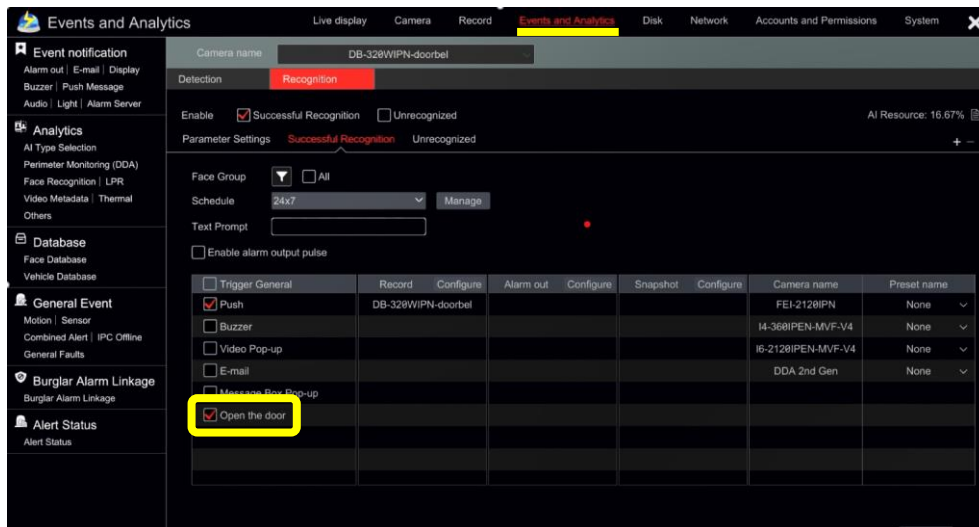
Watch the Video

8) IMPROVED: DOORBELL DOORLOCK SUPPORT

Face the future of door entry!

Until now, when the Doorbell was connected to a Face Recognition NVR, it could record as a regular camera stream with various analytics, such as face detection.

The "Open the Door" trigger in the v1.4.10 FW allows the Doorbell to use the NVR's face recognition function to open the door instead of an RFID card or from remote via the Cam2 App.



Watch the Video

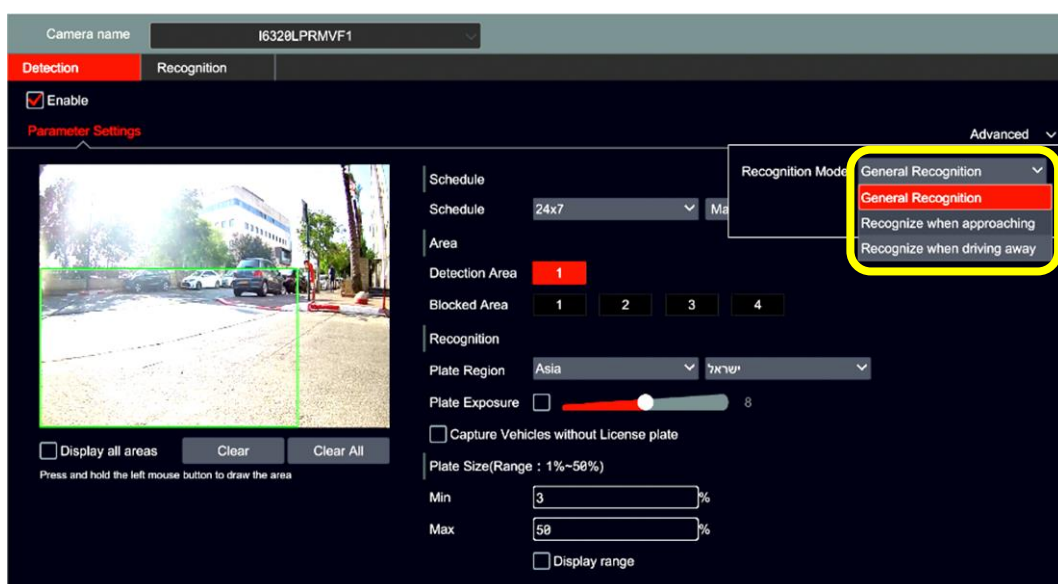
9) IMPROVED: LPR CAMERA SETTINGS

Version 1.4.10 ushers in convenience and innovation.

All LPR Camera settings are now available directly on the NVR's interface.

Configure special LPR comparison rule settings and even detect the vehicle's direction, whether making a grand entrance or bidding a stylish exit.

You read it right! The NVR now recognizes cars **approaching or leaving** using a **single LPR camera**.

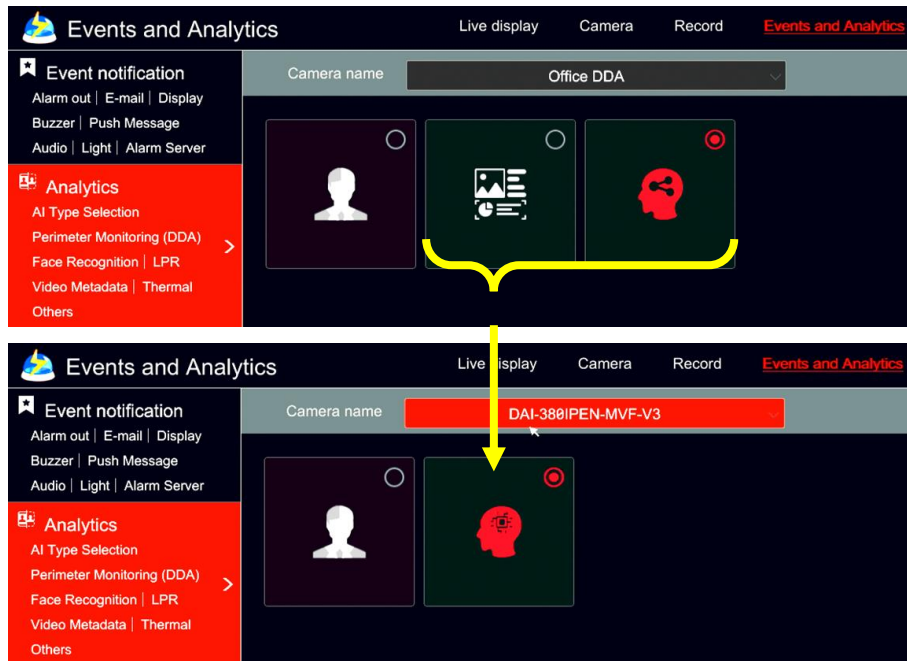


10) IMPROVED: MULTIPLE AI RULES

The IPC's recent update brought the magic of **combined features** where you could simultaneously activate the Face Detection feature or multiple real-time Analytics. Now, it's the NVR's time to mesmerize.

The NVR now supports AI switching on your IP Cameras.

Depending on your Camera's FW (5.1.3.0 / 5.1.3.1), your NVR's display will showcase **3 or 2 icons**.

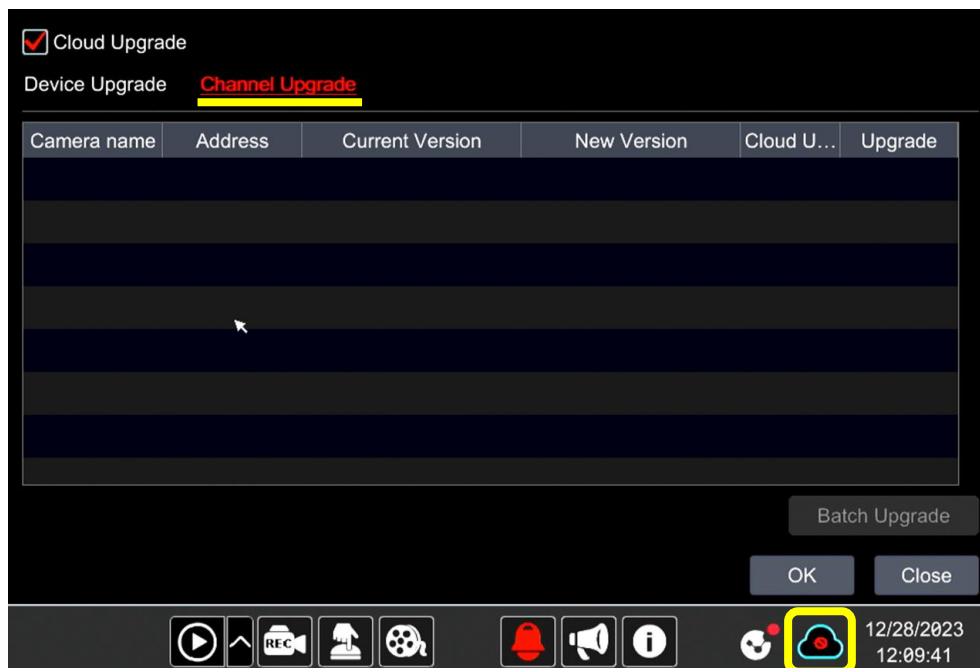


11) NEW: IP CAMERA CLOUD UPGRADE

Upgrade your Game!

With this new feature, NVRs will offer **direct IPC FW upgrades**.

*Will support IPC version 5.2.X (future release)

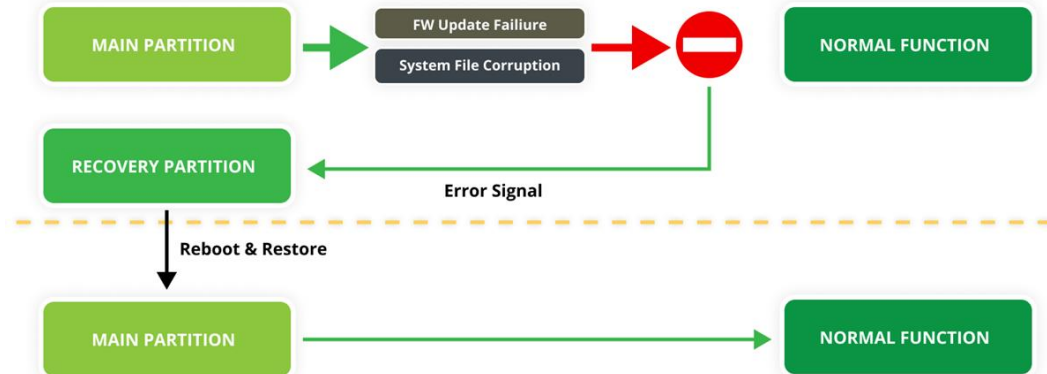
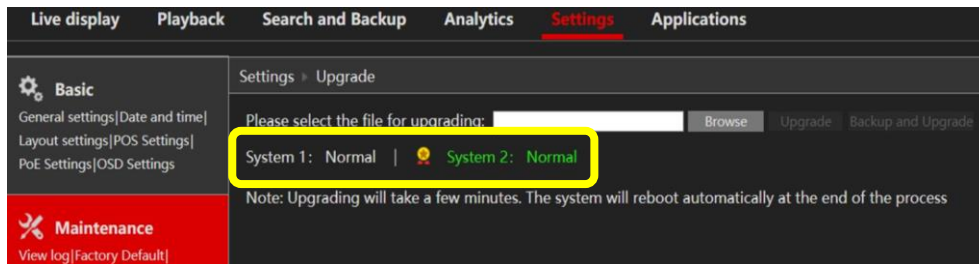


12) NEW: DUAL SYSTEM SUPPORT

Double the Power, Double the Confidence!

Our new NVRs (with suitable hardware) are rocking a **dual partition setup**, where the primary partition **features the Ossia OS**, and the secondary stands tall as the **mighty backup**.

Fear not the FW updates or power glitches. Our strategic setup **ensures flawless performance** and installer confidence like never before!



13) IMPROVED: THERMAL IPC ON POE

Prior to this update, thermal cameras connected via PoE could only display the Optic channel. With this latest update, Thermal IPC connected to a **PoE NVR** offers a **dual-view experience**.

Enjoy thermal and optic streams, **utilizing two channels and two ports** for an enhanced perspective.

No.	Camera name	Address	Port	Status	Protocol	Model	Preview	Edit
20	IP camera02	172.18.254.14	9008	Offline	Provision ISR	DMA-380IPEN-28-V3		
22	IP camera03	172.18.254.15	9008	Offline	Provision ISR	I6-320LPR-MVF1		
25	IP camera04	172.18.254.70	9008	Offline	Provision ISR			
13	[PoE13]BLH-THERMAL-25-OPTIC_CH	172.18.254.113	9008	Online	Provision ISR	BLH-THERMAL-25		
26	THERMAL	172.18.254.113	9008	Online	Provision ISR	BLH-THERMAL-25		

Watch the Video

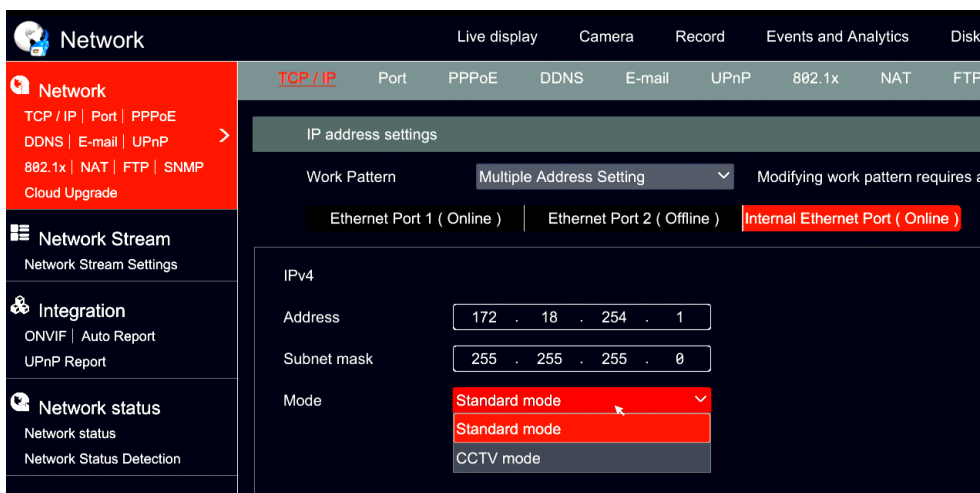
14) NEW: EXPANDING POE INFRASTRUCTURE

Adding PoE cameras in remote locations just got easier.

Until now, you had two options. Connecting each camera directly to the PoE NVR **using a cable** or Connecting all Cameras to a remote PoE Switch and that switch to the PoE NVR via the **regular LAN connection**.

With v1.4.10, you can add remote cameras to one of the PoE ports in the PoE NVR via a PoE Switch, but here's the tip - **preconfigure each camera with a static PoE** for a flawless setup!

For example, you have a remote camera connected directly to a PoE NVR with a cable and want to add 3 more cameras. Now, you can connect all 4 cameras to a PoE switch and, using the existing cable, the switch to the PoE NVR.



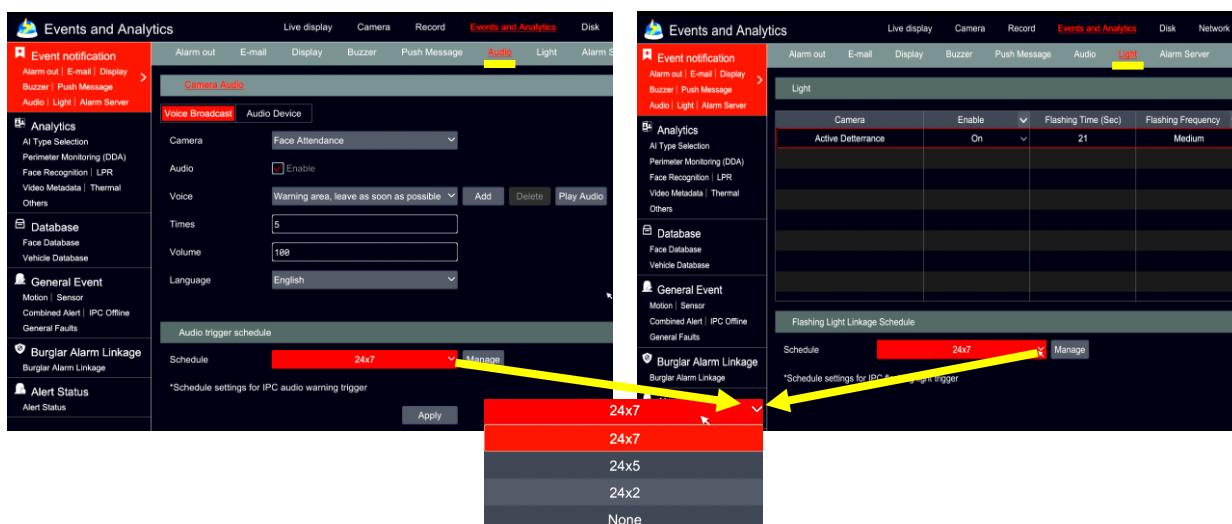
15) IMPROVED: ACTIVE DETERRENCE IPC CONTROL

Take control with FW v1.4.10.

You can **schedule** when the **strobe lights and speaker on Active Deterrence IP Cameras** kick in.

Also, in the previous v1.4.7 release, we introduced the "Burglar Alarm Linkage" feature, allowing automatic control of all NVR triggers using your burglar alarm. Now, it **includes the Active Deterrence cameras updated to FW v.5.1.2 and above**.

Supported models: DI-340AD-MVF, I4-340AD-MVF



SUPPORTED MODELS